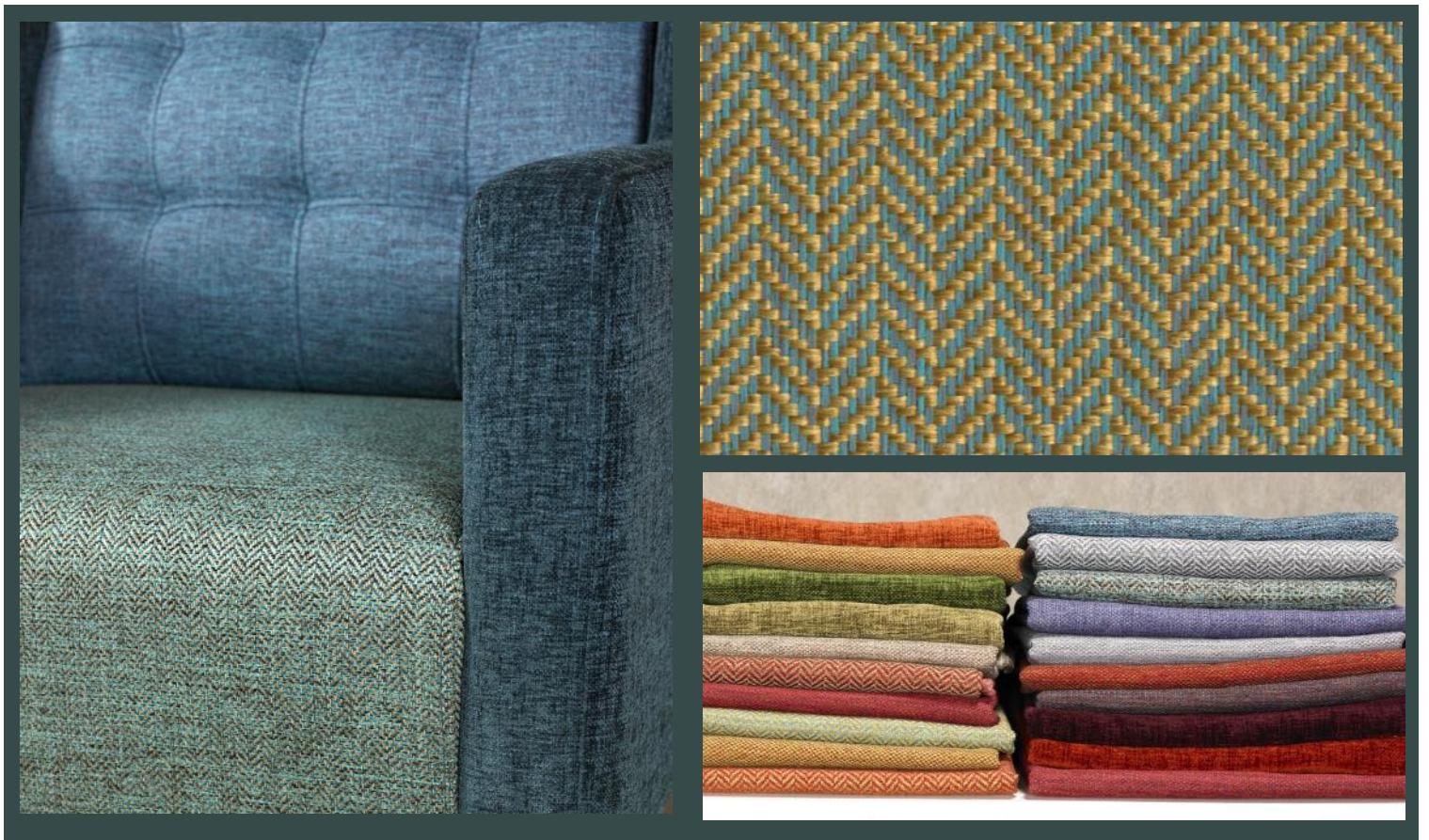


CHAMONIX

Flame Retardant Textured Upholstery Fabrics



Stylish, woven upholstery fabrics

For contract interiors

From the ACCENTS range by Skopos

skopos

CHAMONiX



- Waterproof and Crib 5 FR/Crib 5 FR only
- Soil and Stain Resistant
- 50,000 Martindale Rubs
- Antimicrobial & Anti-fungal

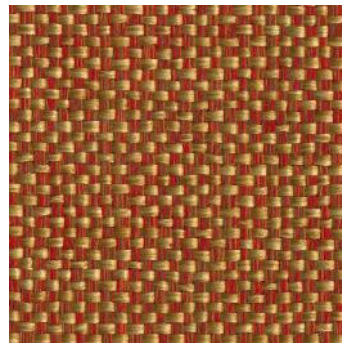
CHAMONIX

A collection of 3 upholstery fabric designs from our Accents range. Each design works beautifully alone or combined to create simple, contemporary and stylish contract furniture pieces. In an extensive palette, ranging from staple neutrals to fashion-led brights, colours can be selected and combined to fit with a chosen project scheme.

Orelle, Marmotte and Slalom are provided with Crib 5 Flame Retardant backing and meet the requirements for severe contract situations, a beautiful choice for hospitality interiors.



Marmotte C9 Inferno



Orelle C4 Clément



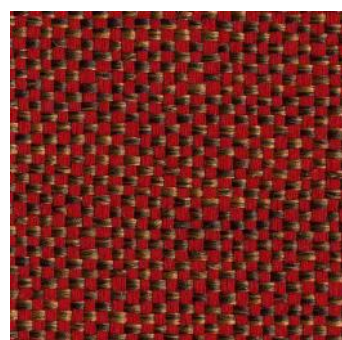
Slalom C6 Melba



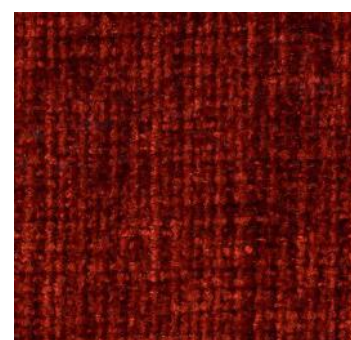
Orelle C6 Sloe



Slalom C8 Fraise



Orelle C5 Crush

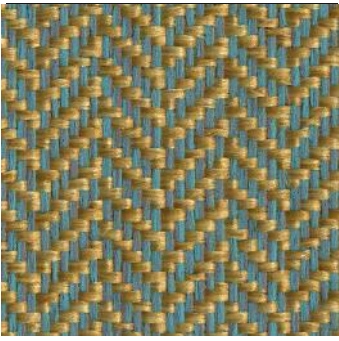


Marmotte C10 Carmine

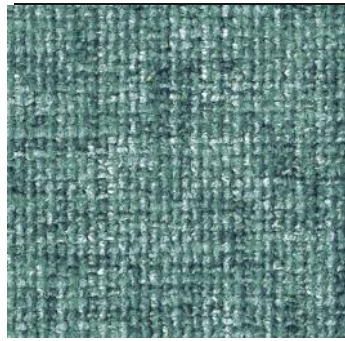


Slalom C7 Kirsch

From the Accents range by Skopos



Slalom C9 Reef



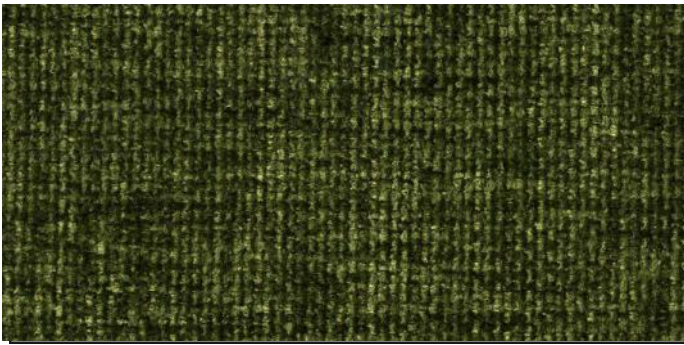
Marmotte C5 Dream



Orelle C7 Aqua



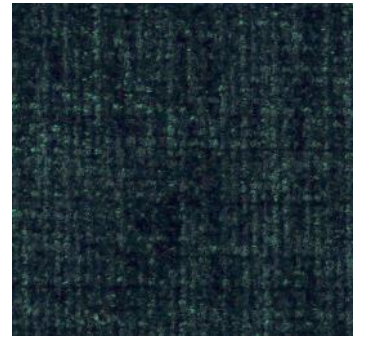
Marmotte C15 Ink



Marmotte C7 Pine



Slalom C10 Marlin



Marmotte C13 Mallard



Marmotte C4 Chartreuse



Marmotte C6 Moss



Orelle C1 Timber



Marmotte C1 Maple



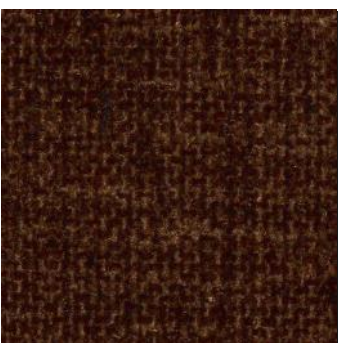
Slalom C5 Bullion



Marmotte C3 Elk



Slalom C2 Thatch



Marmotte C11 Mocha



Slalom 12 Burrow



Orelle C9 Bruno



Slalom C1 Cane

From the Accents range by Skopos



Slalom C11 Cadet



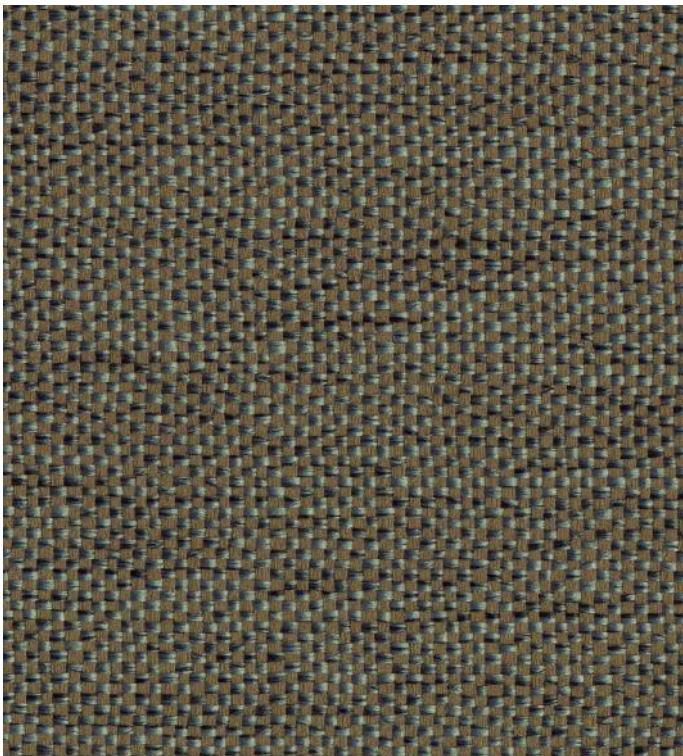
Marmotte C12 Majestic



Orelle C10 Fig



Marmotte C14 Black Cherry



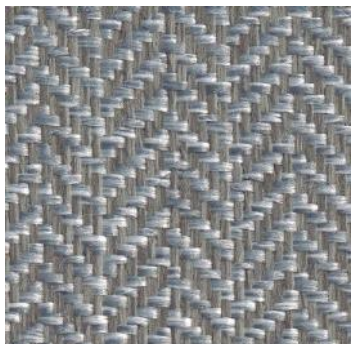
Orelle C3 Ferro



Orelle C8 Logan



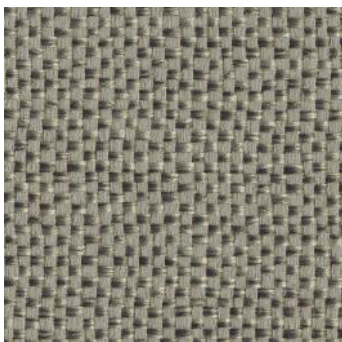
Slalom C13 Cassis



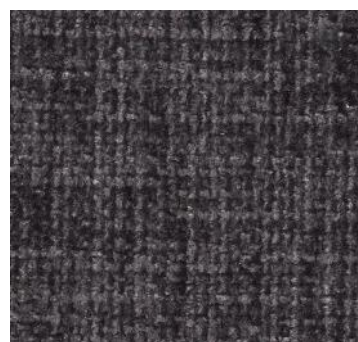
Slalom C3 Silver



Marmotte C16 Slate



Orelle C2 Flint



Marmotte C8 Steel



Slalom C4 Sparrow



Marmotte C2 Lark



Marmotte C14 Coal

CHAMONIX

SPECIFICATIONS

DESIGN	COMPOSITION	SUITABLE USE	WEIGHT	WIDTH	REPEAT	CLEANING
DESSIN	COMPOSITION	UTILISATION	POIDS	LARGEUR	RACCORD	ENTRETIEN
DESIGN	ZUSAMMENSETZUNG	VERWENDUNG	GEWICHT	BREITE	PAPPORT	PFLEGE
DISEGNO	COMPOSIZIONE	UTILIZZO	PESO	LARGHEZZA	RAPPORTO	MANUTENZIONE
DISEÑO	COMPOSICION	USO	PESO	ANCHO	REPETICION	LAVADO
Marmotte*	100% Polyester + FR Backcoating		425gsm	137cm	0cm	
Orelle*	100% Polyester + FR Backcoating		305gsm	137cm	0cm	
Slalom*	100% Polyester + FR Backcoating		265gsm	137cm	0cm	

*Waterproof options are also available for these designs.

TESTING

DESIGN	CURTAIN FR					UPHOLSTERY FR					UPHOLSTERY GRADE	BEDDING FR		
DESSIN	RIDEAUX FR					GARNITURE FR					QUALITE DE GARNITURE	COUCHAGE FR		
DESIGN	VORHANG FR					BEZUGSSTOFF FR					BEZUGSSTOFFQUALITAT	BETTZEUG FR		
DISEGNO	TENDA FR					IMBOTTITE FR					MATINDALE TEST	COPRILETTI FR		
DISEÑO	CORTINA R					TAPICERA IG					GRADO TAPICERIA	ROPA DE CAMA IG		
	BS5867 Type B	USA NFPA 701 #1	IMO FTPC Part 7	French M1	Italian Class 1	German B1	BS5852 Crib 5	EN10231 1+2	USA NFPA 260	IMO FTPC Part 8	Medium Hazard	BS7176 Low & Medium Hazard	BS7177	IMO FTPC Part 9
Marmotte	n/a	n/a	n/a	n/a	n/a	n/a	✓	✓	✓	✓	✓	50,000	n/a	n/a
Orelle †	n/a	n/a	n/a	n/a	n/a	n/a	✓	✓	✓	✓	✓	50,000	n/a	n/a
Slalom	n/a	n/a	n/a	n/a	n/a	n/a	✓	✓	✓	✓	✓	50,000	n/a	n/a



Cleaning process

Regularly use a soft brush or vacuum to remove surface dust and marks. For more stubborn dirt use a damp microfibre cloth and water, working in a circular motion. Do not rub vigorously as this may damage the surface. Do not machine wash. Avoid any contact with bleach based cleaning agents as this can cause significant damage to the fabric.

† Due to random nature of the design striping may occur in the Orelle quality.

SALES OFFICE & EXPRESS SAMPLES SERVICE Tel: + 44 (0) 1924 436666 Fax: + 44 (0) 1924 454575 Mon - Thurs 8.15am to 5.00pm, Fri 8.15am to 3.45pm
SKOPOS FABRICS LTD Head office, Studio & Showroom, Providence Mills, Earlsheaton, Dewsbury, West Yorkshire WF12 8HT, UK Tel: + 44 (0) 1924 465191
 Fax: + 44 (0) 1924 454575 e-mail: sales@skopos.co.uk web: www.skoposfabrics.com We have sales representatives throughout the world.
 Please telephone + 44 (0) 1924 436666 for details of your nearest Agent.

NB: Digital colour swatch for colour reference only. Sample cutting must be referred to prior to specification.

It is the contractor's responsibility to ensure all cleaning instructions are passed onto the end user.

All copyright, design rights and intellectual property rights existing in our designs and products and in the images, text and design of this pattern card will remain the property of Skopos Fabrics Ltd. Any infringement of these rights is actionable in law and will be pursued vigorously.

We are constantly striving to improve the quality of our products and services, also legislation, standards and test methods may dictate change within the lifetime of this pattern card: We therefore reserve the right to alter our specifications accordingly. Please refer to our current price list or telephone our sales desk for confirmation of current specifications.

THIS CARD REMAINS THE PROPERTY OF SKOPOS FABRICS LTD. PLEASE DO NOT DISPOSE OF THIS CARD, IT CAN BE RECYCLED. PLEASE CONTACT SKOPOS FOR COLLECTION.

skopos fabrics LTD.



Certificate Number 2588
ISO 9001

CHAMONiX

DEUXIEME

CHAMONiX

DEUXIEME

Flame Retardant, Woven, Textured Upholstery Fabrics



All of our favourite Chamonix designs in a bold new colour palette

Crib 5 upholstery fabrics, with an antimicrobial finish and a waterproof layer

A follow-on collection from Chamonix

From the ACCENTS range by Skopos



skopos



CHAMONiX

DEUXIEME

TESTING SPECIFICATIONS

DESIGN DESSIN DISEGNO DISEÑO	COMPOSITION COMPOSITION ZUSAMMENSETZUNG COMPOSIZIONE COMPOSICIÓN	SUITABLE USE UTILISATION VERWENDUNG UTILIZZO USO	WEIGHT POIDS GEWICHT PESO PESO	WIDTH LARGEUR BREITE LARGHEZZA ANCHO	REPEAT RACCORD RAPPORT RAPPORTO REPETICIÓN	CLEANING ENTRETIEN PFLEGE MANUTENZIONE LAVADO
Marmotte	100% Polyester, SR, Antimicrobial, Waterproof + Crib 5 Backing		500gsm	137cm	6cm	
Orelle	100% Polyester, SR, Antimicrobial, Waterproof + Crib 5 Backing		410gsm	137cm	6cm	
Slalom	100% Polyester, SR, Antimicrobial, Waterproof + Crib 5 Backing		400gsm	137cm	1cm	

DESIGN DESSIN DISEGNO DISEÑO	CURTAIN FR RIDEAUX FR VORHANG FR TENDA FR CORTINA FR	UPHOLSTERY FR GARNITURE FR BEZUGSSTOFF FR IMBOTTITE FR TAPICERIA IG	UPHOLSTERY GRADE QUALITÉ DE GARNITURE BEZUGSSTOFFQUALITÄT MARTINDALE TEST GRADO TAPICERIA	BEDDING FR COUCHAGE FR BETTZEUG FR COPRILETTI FR ROPA DE CAMA IG	
	BS 5867 Type B USA NFPA 701F1 IMO FTPC Part 7 FRENCH M1 ITALIAN CLASS 1 GERMAN B1 BS5865 Crib 5 EN1021.1+2 USA Cal TB 117.2013 IMO FTPC Part 8 BS7176 Low & Medium Hazard			BS 7175	Upholstery Cleaning process Regularly use a soft brush or vacuum to remove surface dust and marks. For more stubborn dirt use a damp microfibre cloth and water, working in a circular motion. Do not rub vigorously as this may damage the surface. Do not machine wash. Avoid any contact with bleach based cleaning agents.
Marmotte	N/A	✓	50,000	N/A	
Orelle†	N/A	✓	50,000	N/A	
Slalom	N/A	✓	50,000	N/A	

† Due to the random nature of the design striping may occur in the Orelle quality.

SALES OFFICE & EXPRESS SAMPLES SERVICE Tel: + 44 (0) 1924 436666 | Fax: + 44 (0) 1924 454575 Mon to Thurs 8.15am to 5.00pm, Fri 8.15am to 3.45pm
SKOPOS FABRICS LTD Head Office, Studio & Showroom, Providence Mills, Earlsheaton, Dewsbury, West Yorkshire WF12 8HT, UK
 Tel: + 44 (0) 1924 465191 | Fax: + 44 (0) 1924 454575 | email: sales@skopos.co.uk | web: www.skoposfabrics.com
 We have sales representation throughout the world, please telephone +44 (0) 1924 436666 for details of your nearest Agent.

NB: Slight variations in colour, width and weight are inevitable between production batches. Cuttings should be submitted for colour matching.

It is the contractor's responsibility to ensure all cleaning instructions are passed onto the end user.

All copyright, design rights and intellectual property rights existing in our designs and products and in the images, text and design of this pattern card will remain the property of Skopos Fabrics Ltd. Any infringement of these rights is actionable in law and will be pursued vigorously.

We are constantly striving to improve the quality of our products and services, also legislation, standards and test methods may dictate change within the lifetime of this pattern card. We therefore reserve the right to alter our specifications accordingly. Please refer to our current price list or telephone our sales desk for confirmation of current specifications.

THIS CARD REMAINS THE PROPERTY OF SKOPOS FABRICS LTD. PLEASE DO NOT DISPOSE OF THIS CARD, IT CAN BE RECYCLED.
 PLEASE CONTACT SKOPOS FOR COLLECTION.

THIS SHADECARD HAS BEEN PRODUCED ON BOARD FROM SUSTAINABLE SOURCES.

skopos fabrics LTD.

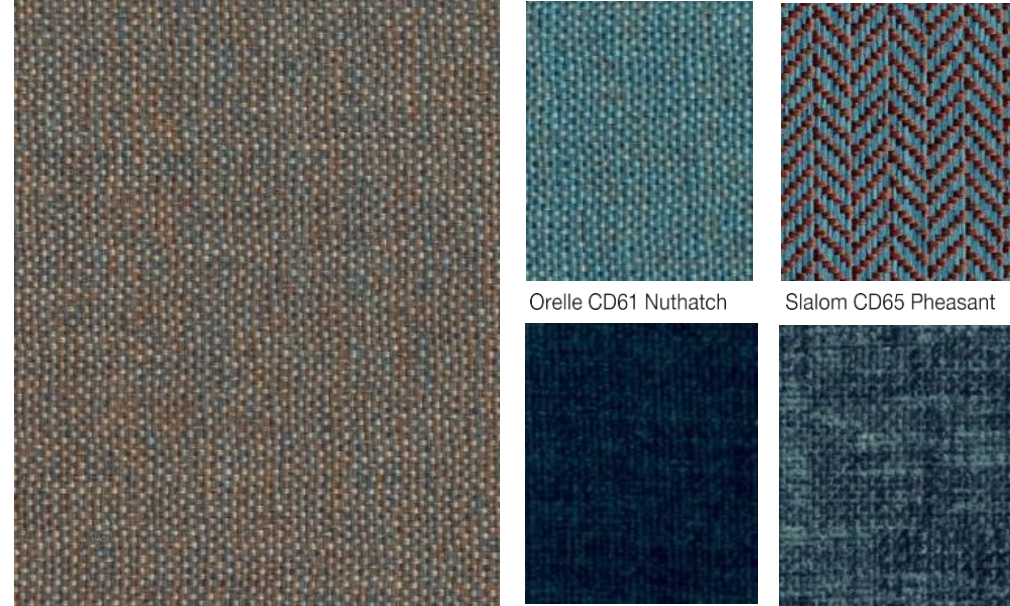


from the ACCENTS range by Skopos

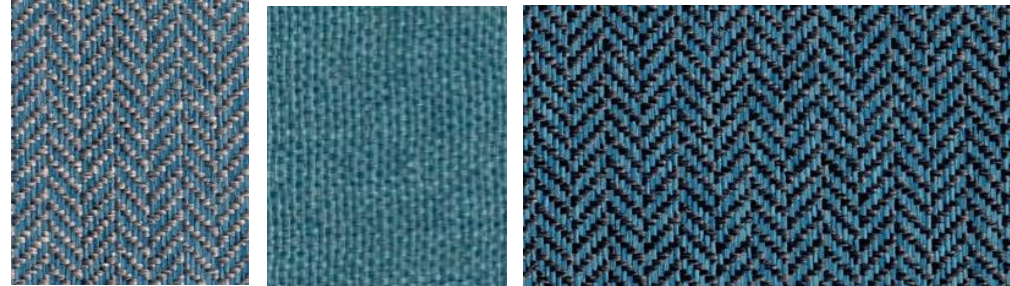
from the ACCENTS range by Skopos



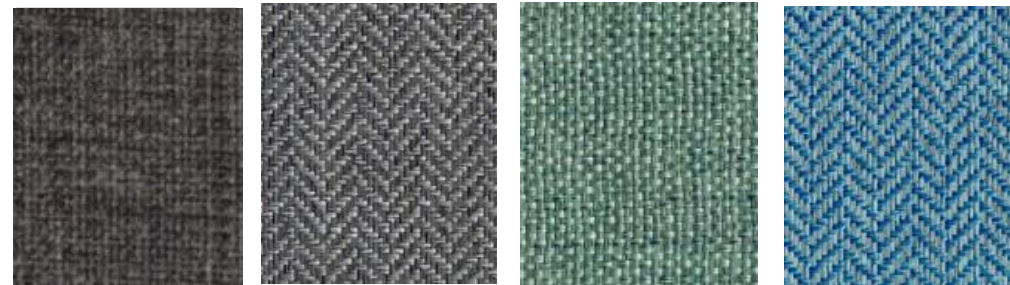
Marmotte CD44 Fox Slalom CD77 Squirrel Marmotte CD45 Nutmeg Slalom CD78 Henna



Orelle CD53 Oxide Marmotte CD51 Marseille Marmotte CD52 Chambray

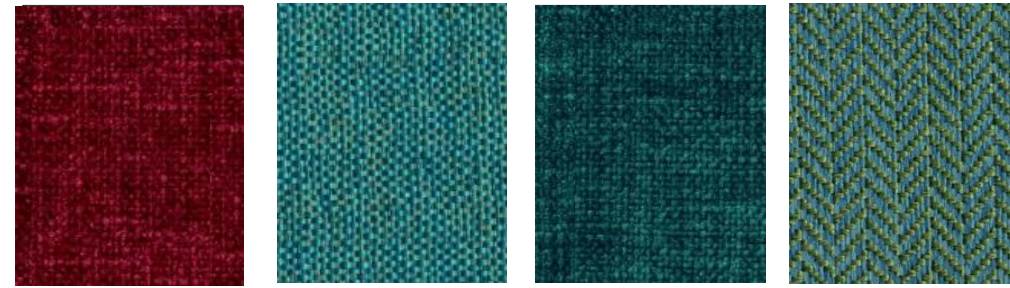


Slalom CD66 Titanic Orelle CD62 Hydro Slalom CD67 Bluebottle



Marmotte CD43 Ammonite Slalom CD70 Anchor Orelle CD59 Iceberg Slalom CD64 Skydive

from the ACCENTS range by Skopos

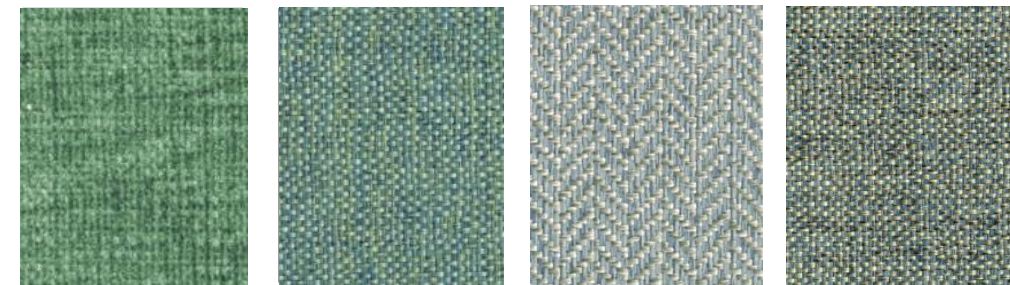


Marmotte CD46 Magenta Orelle CD63 Dragonfly Marmotte CD50 Corsica Slalom CD68 Seaweed

CHAMONIX DEUXIEME

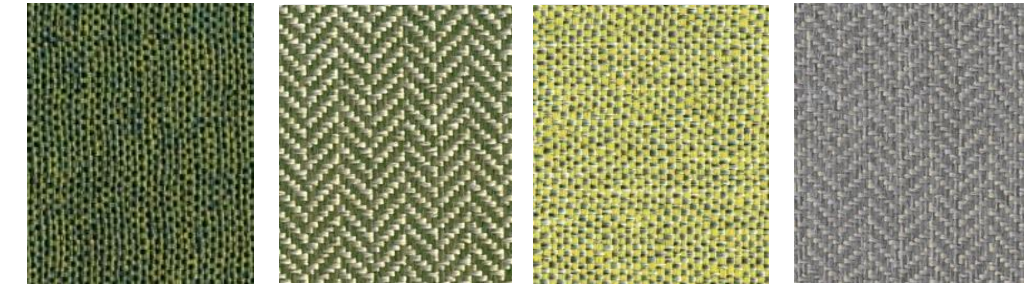
A follow on from our much-loved Chamonix collection, Chamonix Deuxieme brings a new colour story to contract upholstery. A fresh influx of these three well-loved upholstery fabric designs, each design works beautifully alone or together to create simple, contemporary and stylish contract furniture pieces. In an extensive palette ranging from staple neutrals to fashion-led brights, colours can be selected and combined to fit with any chosen project scheme.

Orelle, Marmotte and Slalom are provided with Crib 5 Flame Retardant backing, soil and stain resist finish and a waterproof layer and meet the requirements for severe contract situations, offering a beautiful choice for contract interiors.



Marmotte CD49 Mint Orelle CD60 Acacia Slalom CD71 Putty Orelle CD54 Pumice

from the ACCENTS range by Skopos



Orelle CD58 Elm Slalom CD74 Olive Orelle CD57 Pistachio Slalom CD72 Fog



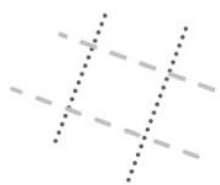
Marmotte CD48 Kiwi Marmotte CD42 Anchovy Orelle CD55 Lynx



Marmotte CD41 Raffia Slalom CD73 Pineapple



Slalom CD75 Siskin Orelle CD56 Dijon Slalom CD76 Alloy



Herriot

Crib 5 Upholstery Fabrics with Antimicrobial Finish and a Waterproof layer.

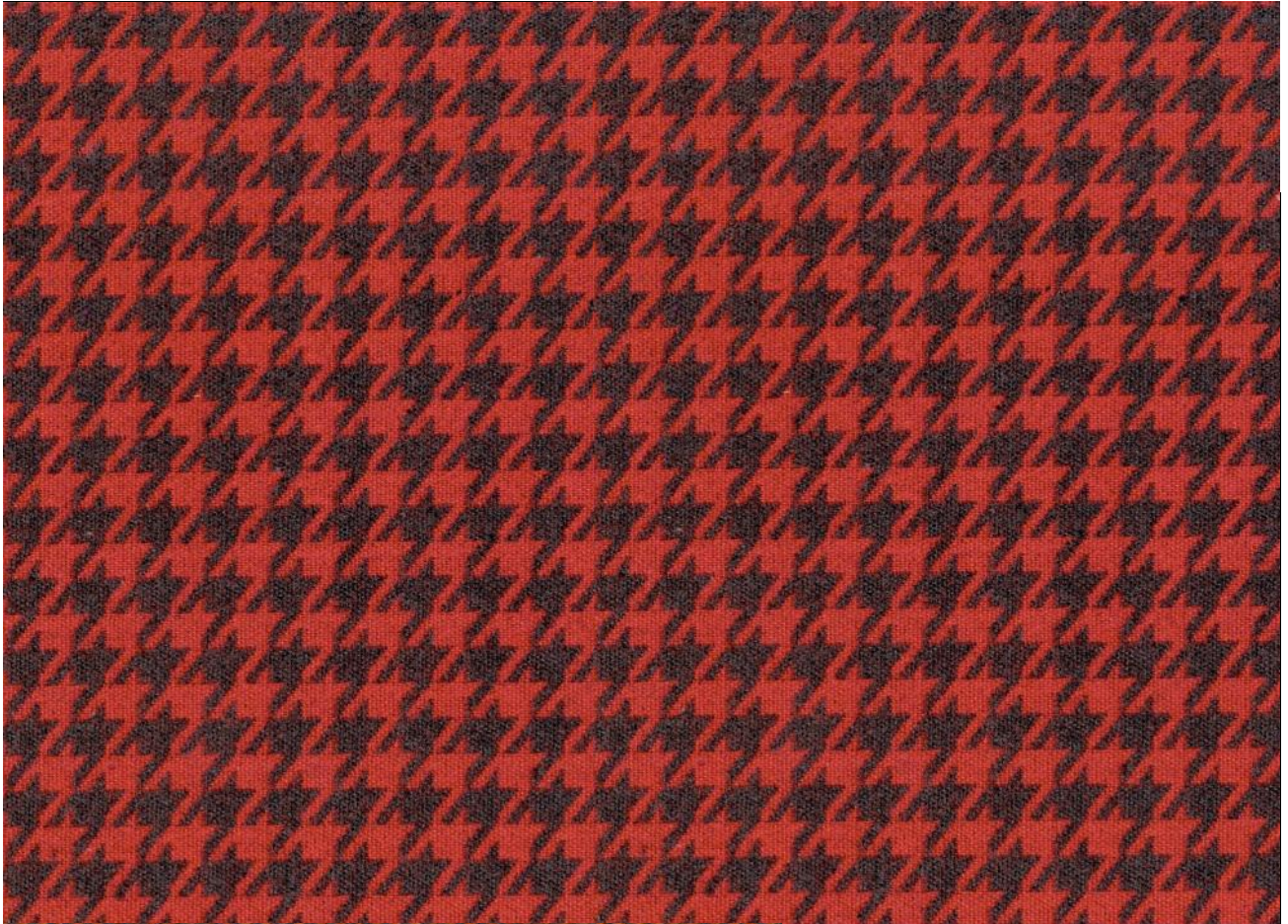


A collection of 4 wool-look, timeless fabric designs, for contract upholstery.

From the ACCENTS range by Skopos



Herriot from the Accents Range by Skopos



Phinn H19 Lobster

Priestley H31 Puffin

Bennett H6 Tabasco

Hughes H9 Herring

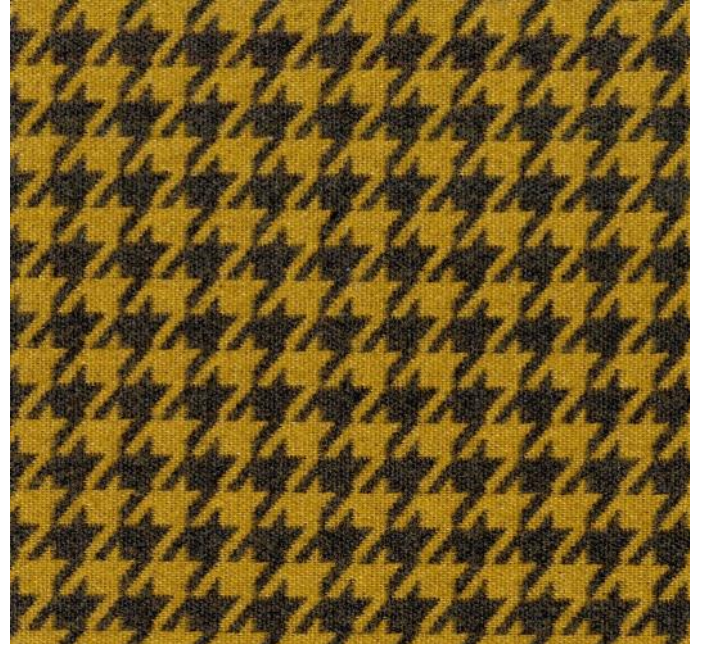
Priestley H28 Chaffinch

Bennett H1 Barn

Herriot from the Accents Range by Skopos



Priestley H29 Parkin



Phinn H22 Bumble



Hughes H11 Midas



Bennett H2 Nectar



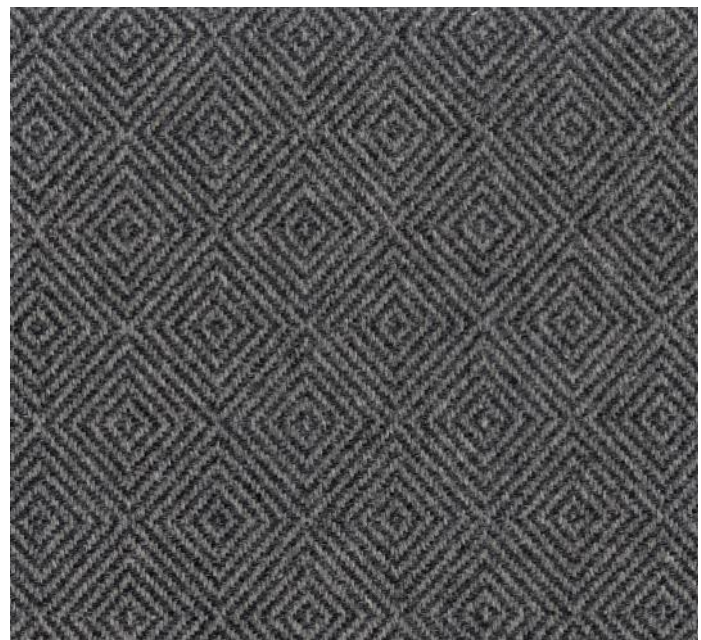
Phinn H17 Mussel



Phinn H15 Flint



Priestly H32 Owl



Hughes H12 Liquorice

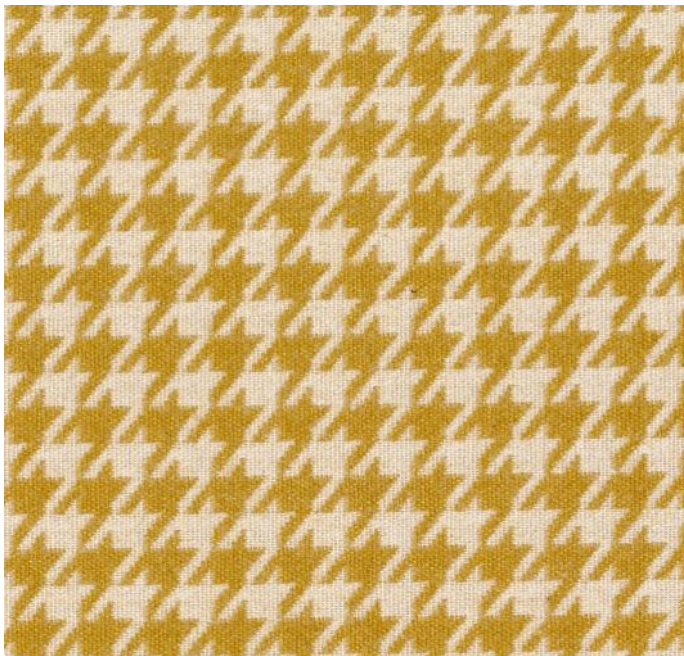


Bennett H8 Cragg

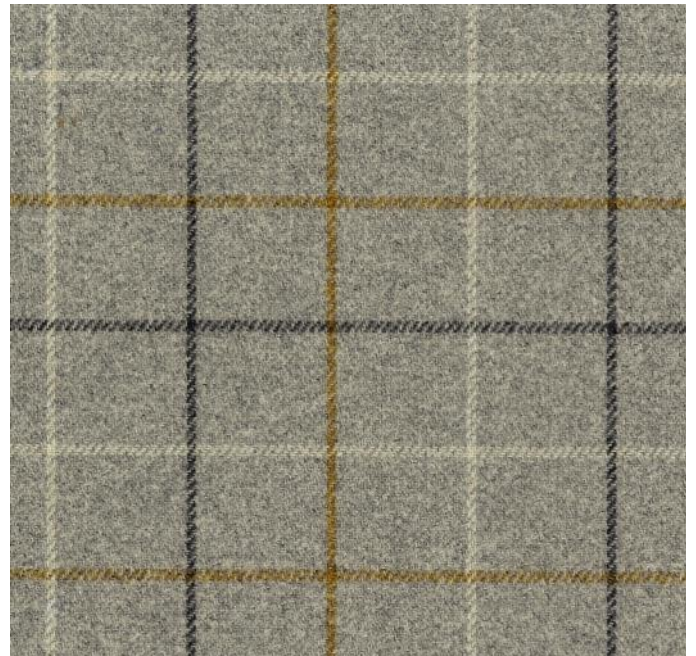


Phinn H24 Charcoal

Herriot from the Accents Range by Skopos



Phinn H21 Gingerbread



Priestley H27 Rum



Hughes H10 Creek



Phinn H26 Gulf



Phinn H25 Squid



Priestley H33 Ink



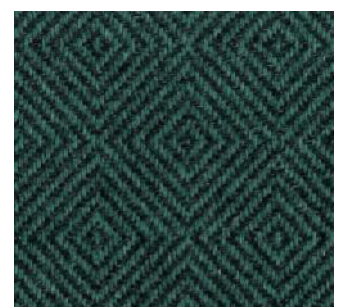
Bennett H5 Cove



Bennett H7 Beck



Phinn H16 Aquamarine



Hughes H13 Harbour

Herriot from the Accents Range by Skopos



Priestley H36 Cerulean



Phinn H18 Coast



Priestley H35 Canal



Priestley H30 Woodland



Hughes H14 Lime



Phinn H23 Asparagus



Priestley H34 Elder



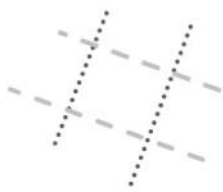
Bennett H3 Heath











Bennett H4 Violet



Phinn H20 Damson



SPECIFICATIONS

DESIGN DESSIN DESIGN DISEGNO DISENO	COMPOSITION COMPOSITION ZUSAMMENSETZUNG COMPOSIZIONE COMPOSICION	SUITABLE USE UTILISATION VERWENDUNG UTILIZZO USO	WEIGHT POIDS GEWICHT PESO PESO	WIDTH LARGEUR BREITE LARGHEZZA ANCHO	REPEAT RACCORD PAPPORT RAPPORTO REPETICION	CLEANING ENTRETIEN PFLEGE MANUTENZIONE LAVADO
Bennett	100% Polyester, SR, Antimicrobial, Waterproof + Crib 5 Backing		482gsm	137cm	2cm	
Hughes	100% Polyester, SR, Antimicrobial, Waterproof + Crib 5 Backing		486gsm	137cm	5cm	
Phinn	100% Polyester, SR, Antimicrobial, Waterproof + Crib 5 Backing		600gsm	137cm	2cm	
Priestley	100% Polyester, SR, Antimicrobial, Waterproof + Crib 5 Backing		470gsm	137cm	10cm	

TESTING

DESIGN DESSIN DESIGN DISEGNO DISENO	CURTAIN FR RIDEAUX FR VORHANG FR TENDA FR						UPHOLSTERY FR GARNITURE FR BEZUGSSTOFF FR IMBOTTITE FR TAPICERA IG					UPHOLSTERY GRADE QUALITE DE GARNITURE BEZUGSSTOFFQUALITAT MATINDALE TEST GRADO TAPICERIA		BEDDING FR COUCHAGE FR BETTZEUG FR COPRILETTI FR ROPA DE GAMA IG	
	BS 5867 Type B	USA NFPA701 #1	IMO FTPC Part 7	FRENCH M1	ITALIAN CLASS 1	GERMAN B1	BS5852 Crib 5	EN1021.1 & 2	USA Cal TB 117 2013	IMO FTPC Part 8	BS7176 Low & Medium Hazard			BS 7175	IMO FTPC Part 9
Bennett	N/A	N/A	N/A	N/A	N/A	N/A	✓	✓	✓	✓	-	40,000		N/A	N/A
Hughes	N/A	N/A	N/A	N/A	N/A	N/A	✓	✓	✓	✓	-	40,000		N/A	N/A
Phinn	N/A	N/A	N/A	N/A	N/A	N/A	✓	✓	✓	✓	-	45,000		N/A	N/A
Priestley	N/A	N/A	N/A	N/A	N/A	N/A	✓	✓	✓	✓	-	50,000		N/A	N/A



Cleaning process

Regularly use a soft brush or vacuum to remove surface dust and marks. For more stubborn dirt use a damp microfibre cloth and water, working in a circular motion. Do not rub vigorously as this may damage the surface. Do not machine wash. Avoid any contact with bleach based cleaning agents as this can cause significant damage to the fabric.

SALES OFFICE & EXPRESS SAMPLES SERVICE Tel: + 44 (0) 1924 436666 Fax: + 44 (0) 1924 454575 Mon - Thurs 8.15am to 5.00pm, Fri 8.15am to 3.45pm

SKOPOS FABRICS LTD Head office, Studio & Showroom, Providence Mills, Earlsheaton, Dewsbury, West Yorkshire WF12 8HT, UK
Tel: + 44 (0) 1924 465191 Fax: + 44 (0) 1924 454575 e-mail: sales@skopos.co.uk web: www.skoposfabrics.com We have sales representatives throughout the world. Please telephone + 44 (0) 1924 436666 for details of your nearest Agent.

Slight variations between colour, width and weight are inevitable between production batches. Cuttings should be submitted for colour matching.

It is the contractor's responsibility to ensure all cleaning instructions are passed onto the end user.

All copyright, design rights and intellectual property rights existing in our designs and products and in the images, text and design of this pattern card will remain the property of Skopos Fabrics Ltd. Any infringement of these rights is actionable in law and will be pursued vigorously.

We are constantly striving to improve the quality of our products and services, also legislation, standards and test methods may dictate change within the lifetime of this pattern card: We therefore reserve the right to alter our specifications accordingly. Please refer to our current price list or telephone our sales desk for confirmation of current specifications.

THIS CARD REMAINS THE PROPERTY OF SKOPOS FABRICS LTD. PLEASE DO NOT DISPOSE OF THIS CARD, IT CAN BE RECYCLED. PLEASE CONTACT SKOPOS FOR COLLECTION.

